

XM3 Microprox[™] Small Business Access Control Solution

Discover the world of next generation [proximity readers](#).

XM3 MICROPROXS[™] is a stand-alone proximity reader/controller [all in one](#), which can function as a single door access control solution but can also be easily connected in a RS485 network.

Today's ID security market is changing faster than ever before. As an independent ID security provider, IDtech has identified this trend and now introduces the XM3 Microprox[™]. The next generation proximity readers XM3 Microprox[™] incorporates multiple tag standards (125kHz EM or HID; 13.56 MHz Mifare) and offers programmable on-board memory, which provides an effective answer to increasing needs within today's security market. Customers can now use multiple tag technologies on the same system for graceful migration to 13.56 MHz technologies.

The XM3 Microprox[™] is designed for use within a network as well as stand-alone use. In network mode, the XM3 Microprox[™] offers "dynamic switching mode", a unique feature that guarantees a seamless take-over of network functionality should the network experience malfunction. In this situation, all security information is locally stored in the XM3 Microprox[™], and then re-submitted to the network once it is back online.

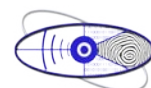
In stand-alone mode, the XM3 Microprox[™] offers you a wide array of features to implement an easy-to-use one-door access control system. On-board memory and internal clock allow events can be stored locally and printed on demand.

Programming of XM3 [Stand-alone](#)

XM3 readers can be programmed in three ways; by Mastercards, Remote Programmer or by PC with XM3 Manage Software. Adding or voiding cards can be done by programming the reader with the Mastercards. To configure the more advanced features of the XM3, the wireless XRP3 remote programmer can be used. With the XM3 Manage software installers and end users can maintain their complete access control solution in the very user friendly way.

Wireless Keypad

For an even higher level of security, PIN codes can be added by mounting IDtech's unique wireless keypad alongside an XM3 Microprox[™].



IDtech

Networking Stand Alone Readers

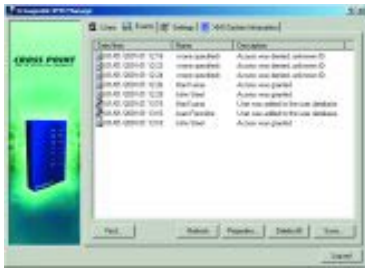
A revolutionary development makes the installation of XM3 readers a very cost efficient solution for the small business segment. It is possible to install maximum 32 XM3's in an RS485 network. This saves installation costs when expanding the system because additional XM3 readers can be added to the installed system. The XM3 reader remain operating stand-alone, they function as a controller and reader all in one. There is no need for additional controllers. The XM3 Manage Software enables all XM3 readers to be configured and maintained from one central location.



XM3C3 Mastercards

"XM3 Manage" Software

XM3 Manage Software is an easy-to-use tool for maintaining the XM3 stand alone memory. Adding or deleting users, time zones, (day & night) or simple anti-pass back features can be set using XM3 manage Software. XM3 Manage Software is available in English, Spanish, German, Dutch, Italian and French.



XM3SOFT XM3 Manage Software

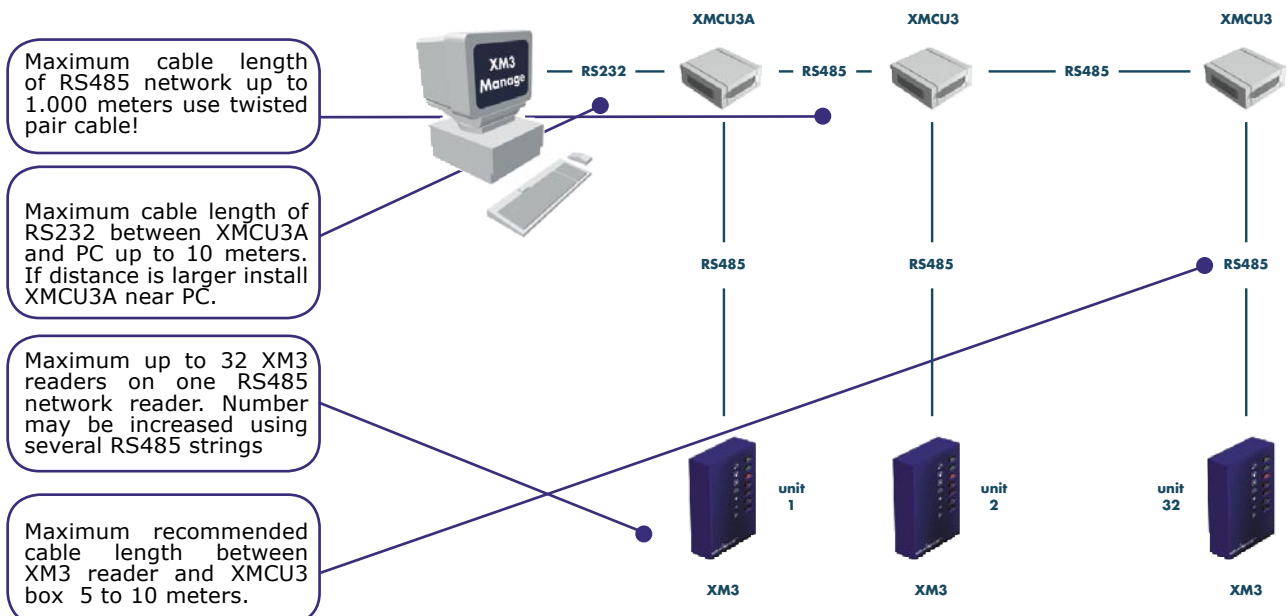
Connection Units

The XMCU3 and XMCU3A are Connection Units that provides simple means on connectivity between the XM3 readers and ancillary products (lock strikes, request to exit switches, etc.) The advanced version additionally provides an RS232 9-pin connector for interfacing to a PC for use with the XM3 Manage Software or to a serial printer for event printing.



XRP3 Remote Programmer

One advanced connection unit (XMCU3A) is required when networking the XM3 Readers and provides the means of connectivity to a PC via RS232. Each subsequent reader requires a basic connection unit XMCU3.



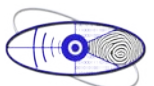
Maximum cable length of RS485 network up to 1.000 meters use twisted pair cable!

Maximum cable length of RS232 between XMCU3A and PC up to 10 meters. If distance is larger install XMCU3A near PC.

Maximum up to 32 XM3 readers on one RS485 network reader. Number may be increased using several RS485 strings

Maximum recommended cable length between XM3 reader and XMCU3 box 5 to 10 meters.

The Right Security at the Right Time



IDtech

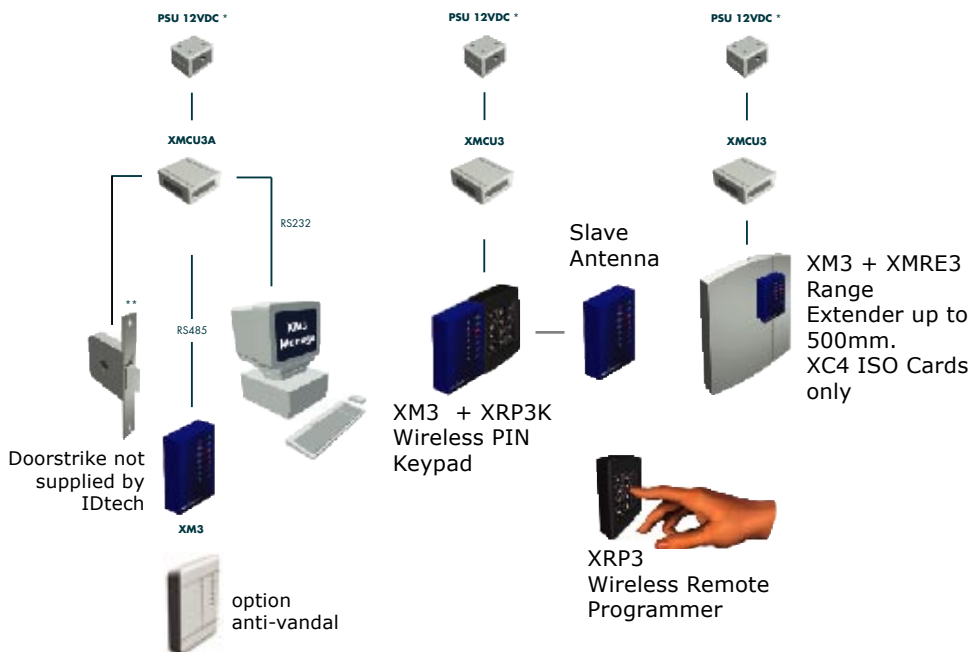
SOME STANDARD FEATURES

- Up to 5.000 users
- Event logging
- Real-Time clock
- RS 485 Network option (up to 32 readers)
- Wireless PIN keypad (Option)
- Time Zones (day/night or combination)
- Anti pass back (timer)
- Range extension up to 500 mm (Option)
- External relay (Option)
- 4 I/O's
- Slave antenna for exit (Option)
- XM3 Manage PC Software (Option)
- Multi-language software
- Simple and easy installation
- "Unipass" Centralized Access control compatible



XM3 + XRP3K Wireless Keypad

PRÉSENTATION DES ACCESSOIRES XM3 MICROPROXS™.



*PSU 12VDC not supplied by IDtech.

SPECIFICATIONS

Supported RF-tags	<ul style="list-style-type: none"> • 125 kHz - EM H4102 Tags and HID Tags • 13.56 MHz - MIFARE®, Micro chip (MCRF355/360)
Performance	<ul style="list-style-type: none"> • Access grant time : < 50ms (average seek time) • Standard read range : 90 mm (with ISO prox card) • Option long range : up to max. 500 mm
Memory	<ul style="list-style-type: none"> • Flash : 8K Boot loader, 24K Operating System, 28K Application • EEPROM Size : 32KByte Standard, 64KByte optional • EEPROM Configurations : 16 • User ID : 40-bit ID + 8 bit additional info (type tag + access level) • User Pin : 4 digits • User Names : variable name lengths (max 24 characters) • Event loggings : 25-bit time stamp, 11-bit event data, 44-bit ID data
Communication interfaces	<ul style="list-style-type: none"> • RS485 : max 32 units, auto switching to off-line mode during network failure. • Mag. stripe output : ISO track 2, Clock & Data, ABA • Wiegand : 26, 34, 37 bit • Other : upon user specification
I/O interface	<ul style="list-style-type: none"> • tamper switch input • 4 buffered user I/O's : user selectable • solid state relay output : 1A / 30VDC, open collector • cable : 3 meter / 12 wires
Power	<ul style="list-style-type: none"> • Voltage : 12VDC +/- 5% • Curent Consumption : 40 mA nominal
Environment	<ul style="list-style-type: none"> • Temperature: -15° C min 70° C max in operation, -40° C min to 90° C max storage • Humidity : max 100%
Housing	<ul style="list-style-type: none"> • Material : Durable ABS • Dimensions (L x W x H) : 82.5 x 48.5 x 24.5mm / 32.5 x 19.1 x 0.96" • Color : Blue, RAL5013

The Right Security at the Right Time

